

Kyyni-Poe - Riia tn Barclay plats



Antares Star



ANTARES 55
47111.01

120
230V/24V 21W
1,5 kg

47112.71

25tk



23122.71

120
230V 9,2W
max.connection 10
1,5 kg



8tk



SIRIUS 150
47771.02

16tk

1400
230V 128 W
19,0 kg

47772.02



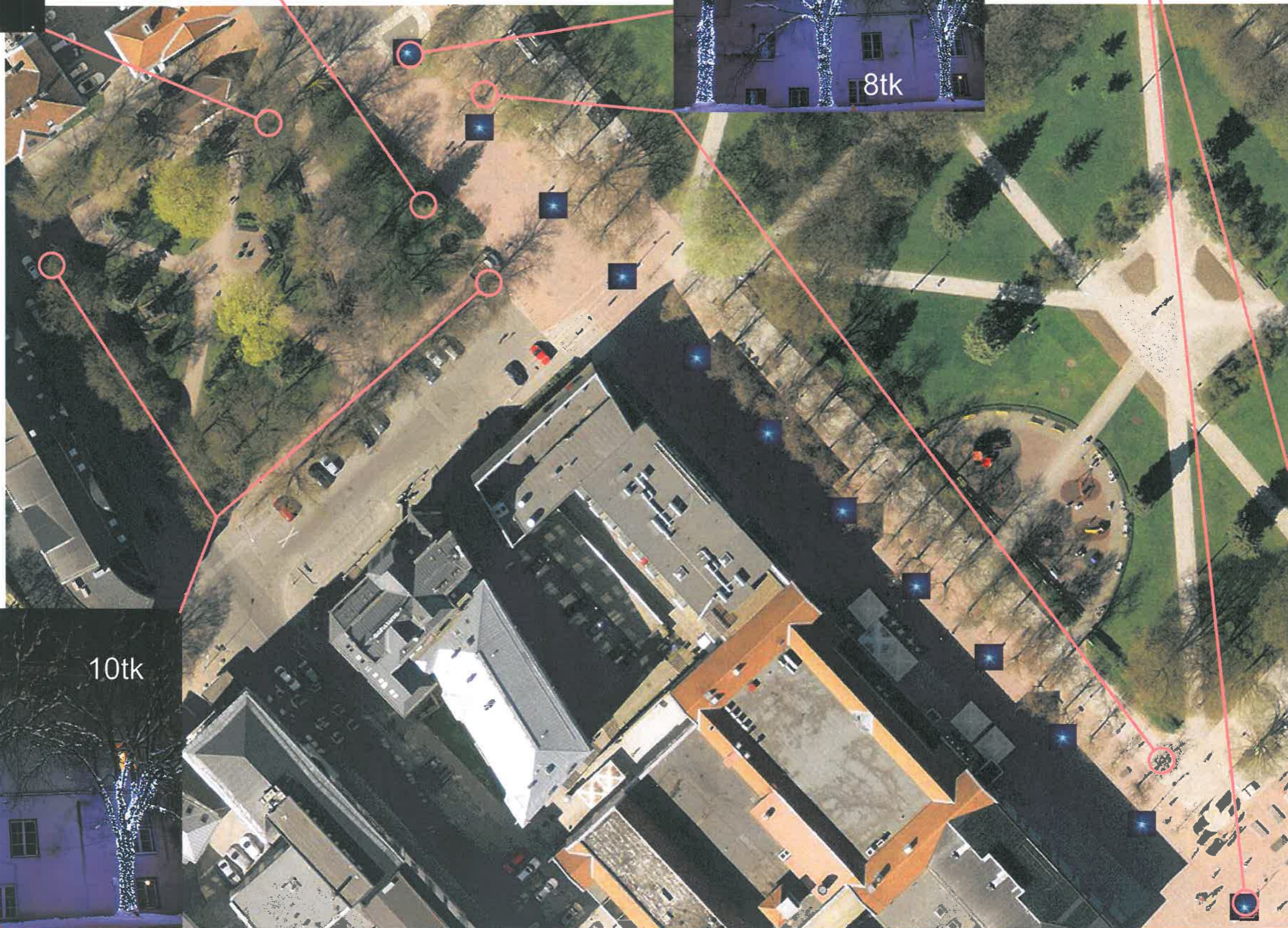
NARVA 300
36168.01

300 x 60 cm
230V 35W
8,0 kg

36168.02



12+4tk



23121.71

120
230V 9,2W
max.connection 10
1,5 kg



10tk