

Bouncia Water Sports LTD

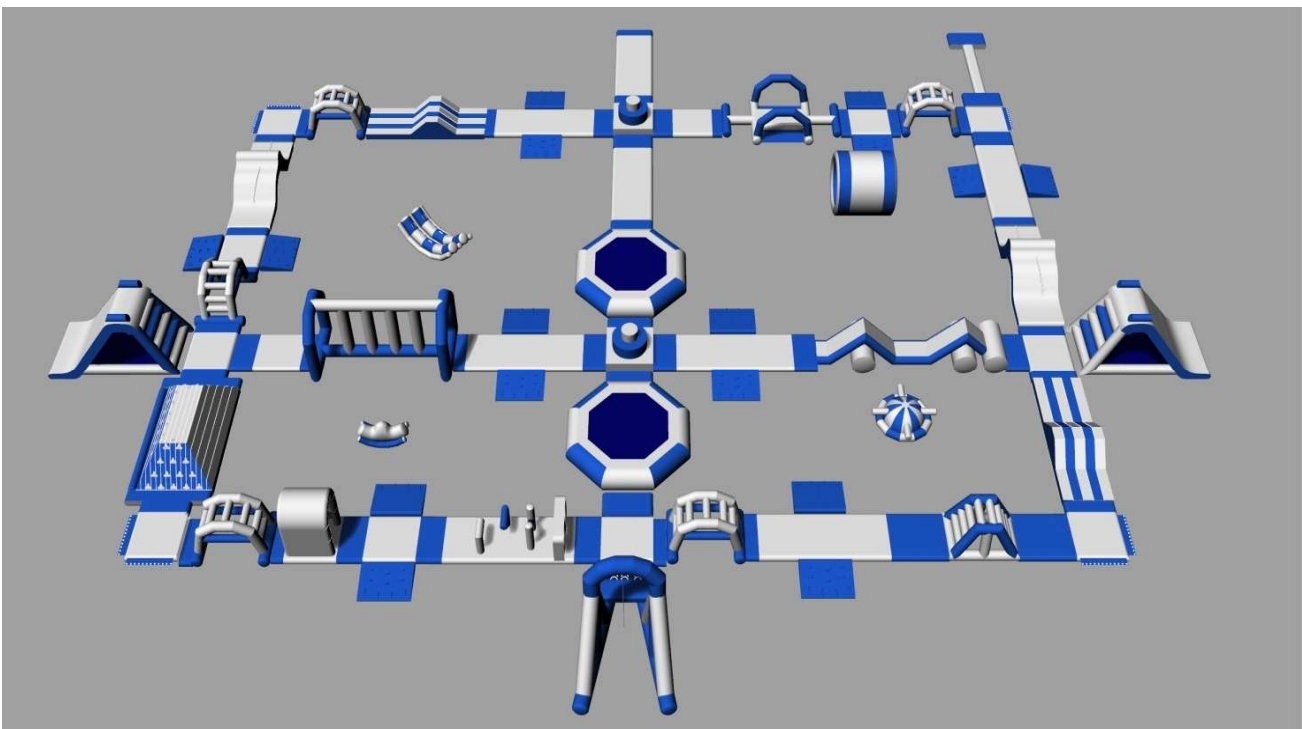
Water park installation instruction

Brief Introduction of the case

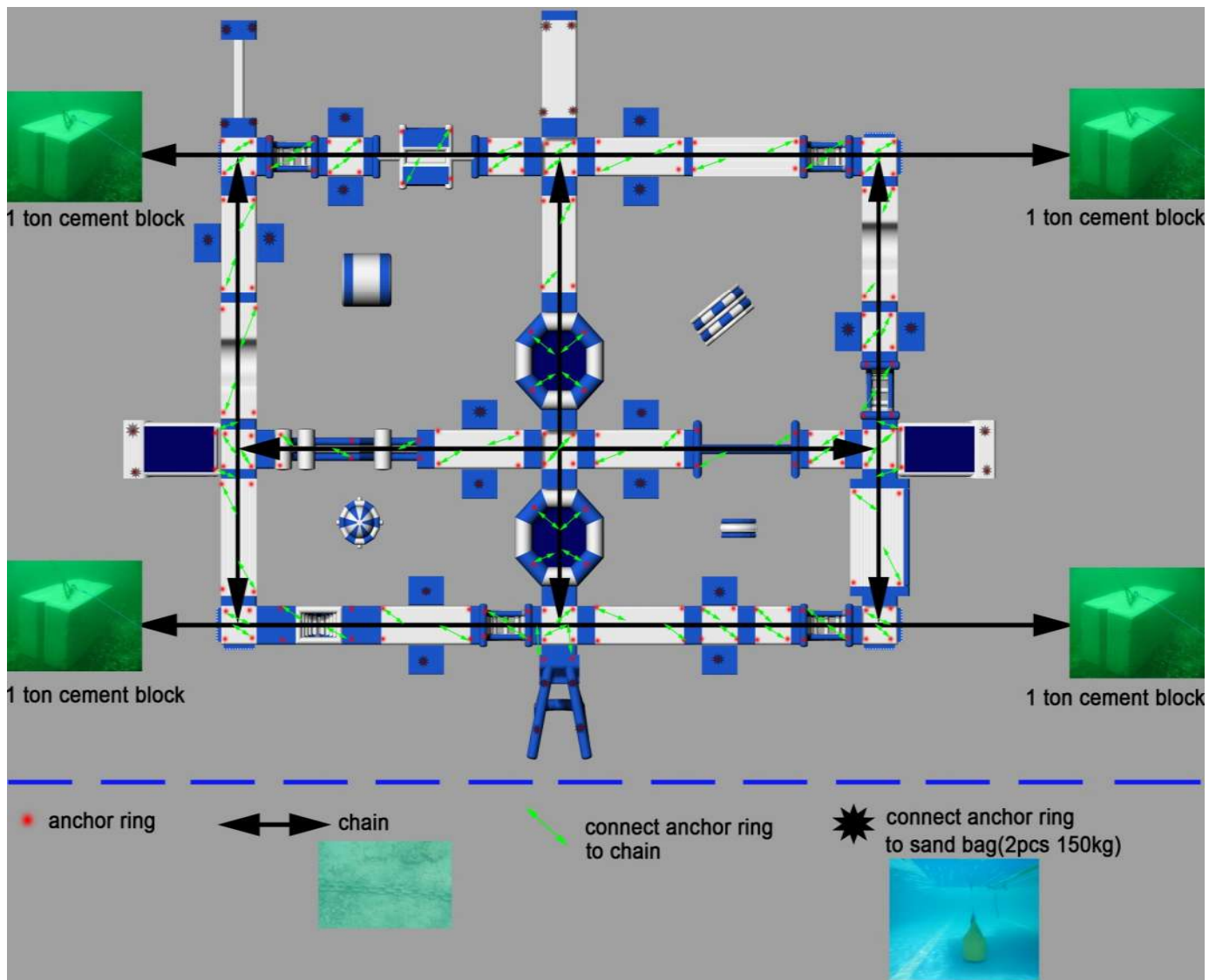
1. Water Area of this case: 49mL * 38.5mW Location: beach resort
2. People needed: total 6-8 people, 2-3 divers, 4-5 labors
3. Installation time: 1-2 days depends on different people and enviroment(excluding the preparing time for blocks)

Attention

1. Please monitor pressure every 1 hour even more frequently at noon time when the temperature rise quickly to ensure the inside pressure is safe, especially for big items like tower, big slide ect. Every piece has safety valve, but for big items, when it's getting too hot, the air may can not comes out in time.
2. Protect the products well to avoid scratch or pierce during transportation and operation on the beach. If the sands on the beach are rough and may scratch or pierce the products, please use ground sheet to protect.
3. Close the park and collect the items if typhoon or storm comes.



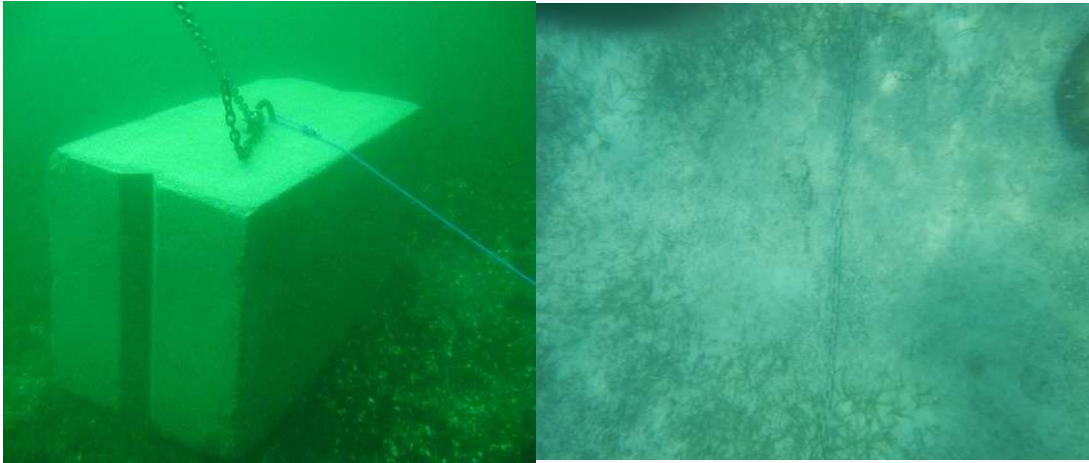
Installation diagram



Installation Steps

1) Assign 4 cement blocks at 4 corners, if your park is bigger than this, you need to add blocks at the middle of four sides, total weight for each block is about 1000kgs, the blocks need to be in place several days before setting up.

2) Using chain to connect all the blocks together to form an entirety, like the black arrows in the layout



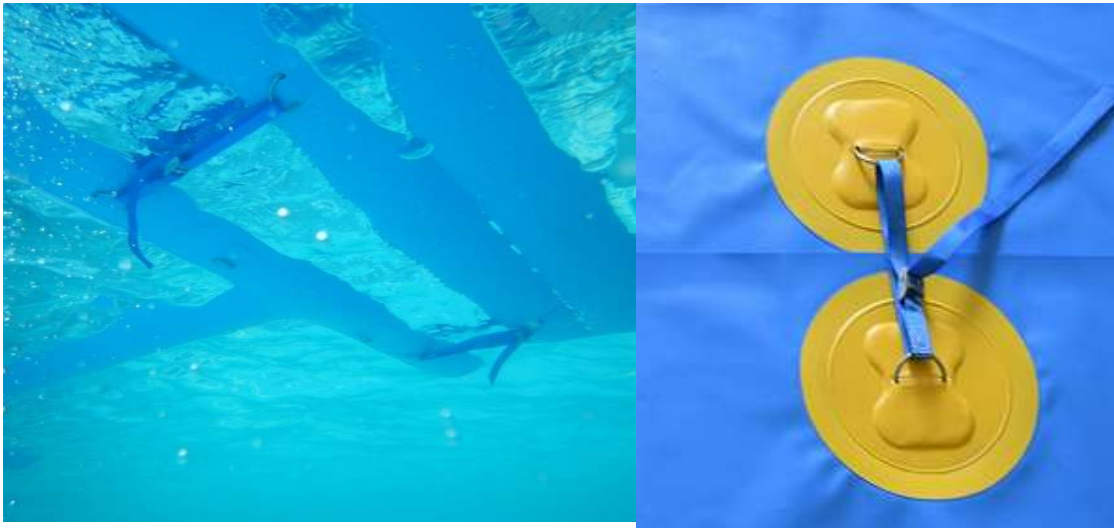
3) Inflate each item at the beach, then push and pull the item into place according to the layout of the park. Here is the inflating process: put the inflating end to the valve and turn clockwise to lock the pump to the valve, turn on the pump to inflate. When the product is inflated, turn off the pump, and turn anticlockwise to take out the pump; close the the valve. Make sure no over-inflation.



4) Connect each item together with ropes and cover the protection flap

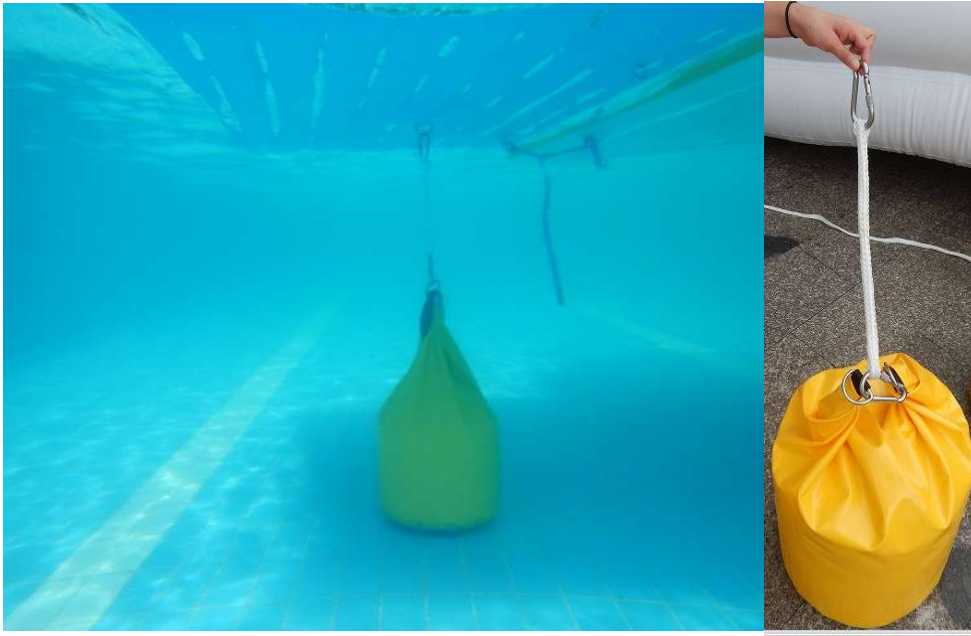


5) Attach the bottom of each item via buckle straps



6) For those items that chains go through, attach some of the anchors to the chains (see green arrows in above diagram), usually attach 2 for small items and attach all for big items, the principle is to keep balance for the whole park.

7) For some items like ramps that the chains do not go through, attach to sand bags (see star symbol in diagram)



8) Park after installation



9) Storage

After season, collect the items, make sure clean and dry each item before packing in a storage bag, use low concentration of toluene as cleaner. Store in dry place and pay attention to the mouse attack.