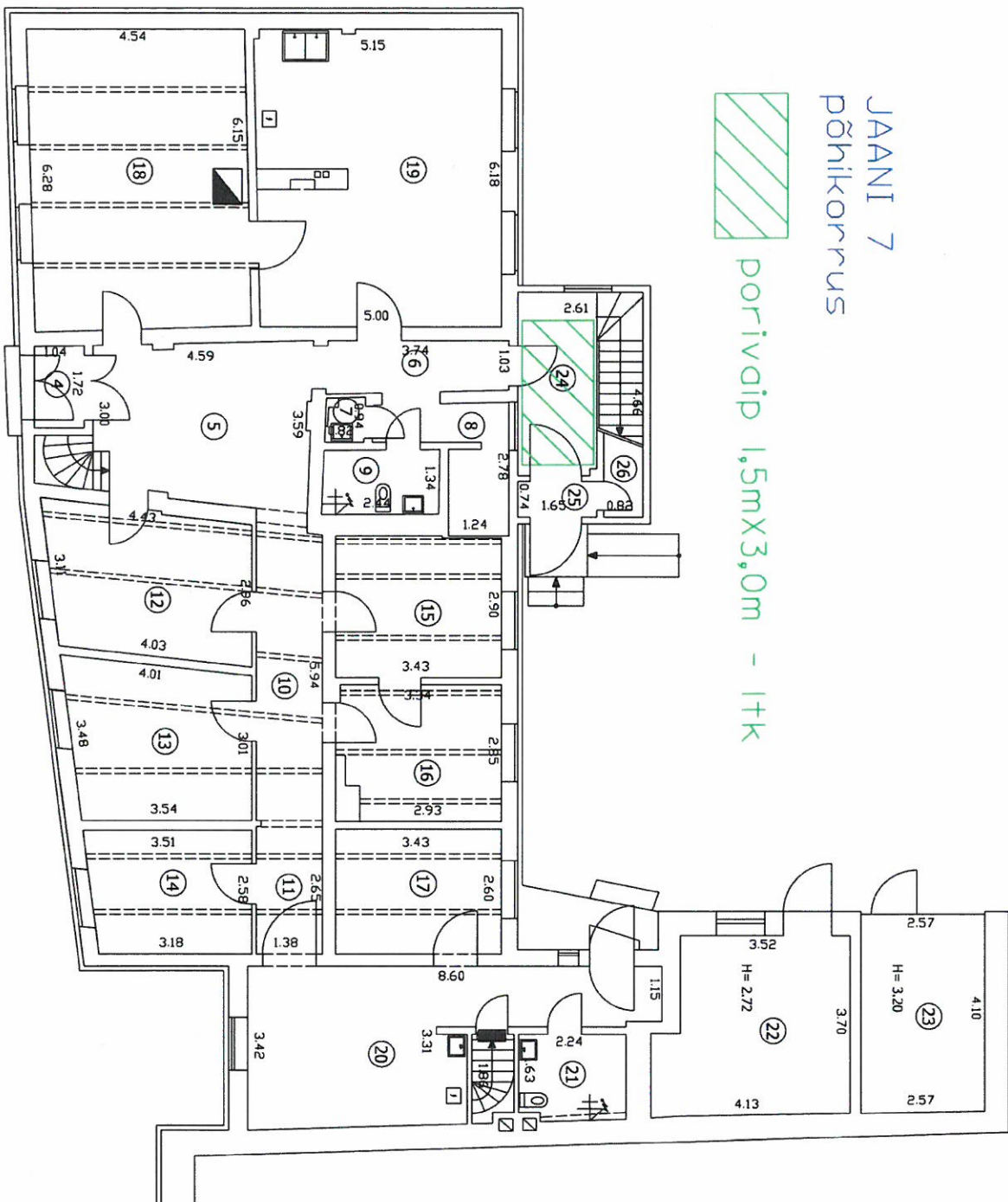


JAANI 7
põhikorrus



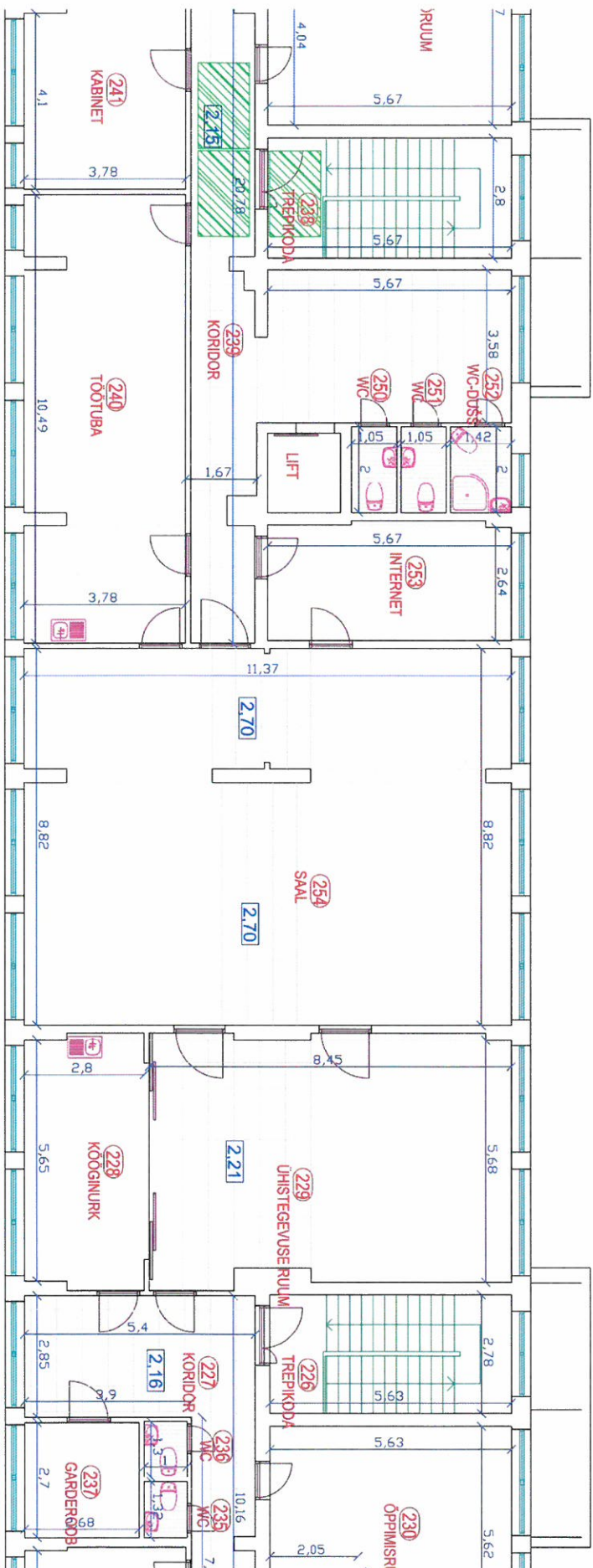
poriavaip 1,5mX3,0m - 1tk



porivaid 1,5mX3,0m - ltk

porivaid 1,2mX2,0m - 1tk

KAUNASE pst 22 teine korrus

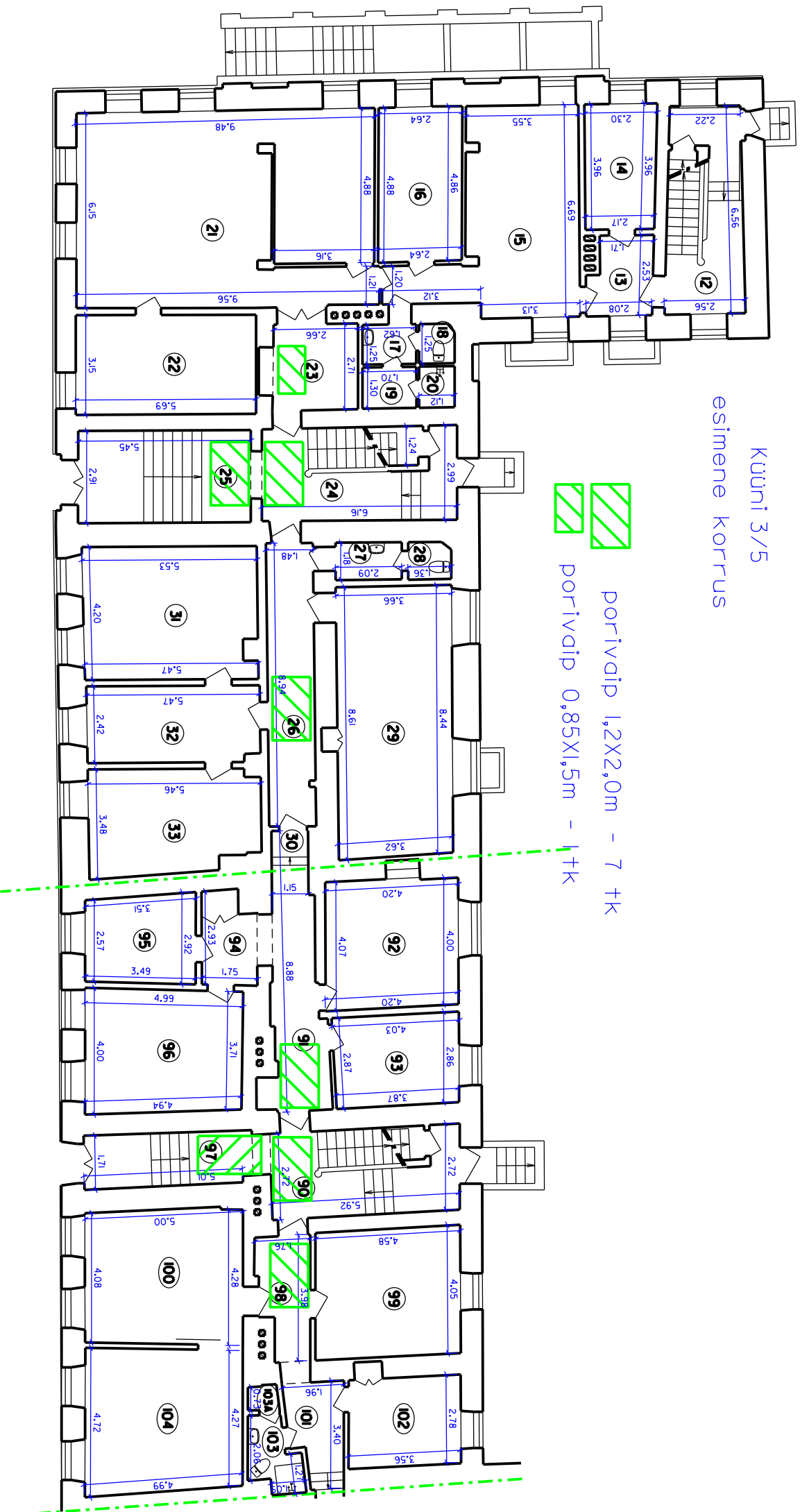


poriivaid 1,2mX2,0m - 3tk

Küüni 3/5

esimene korrus

poriavaip 1,2X2,0m - 7 tk
poriavaip 0,85X1,5m - 1 tk

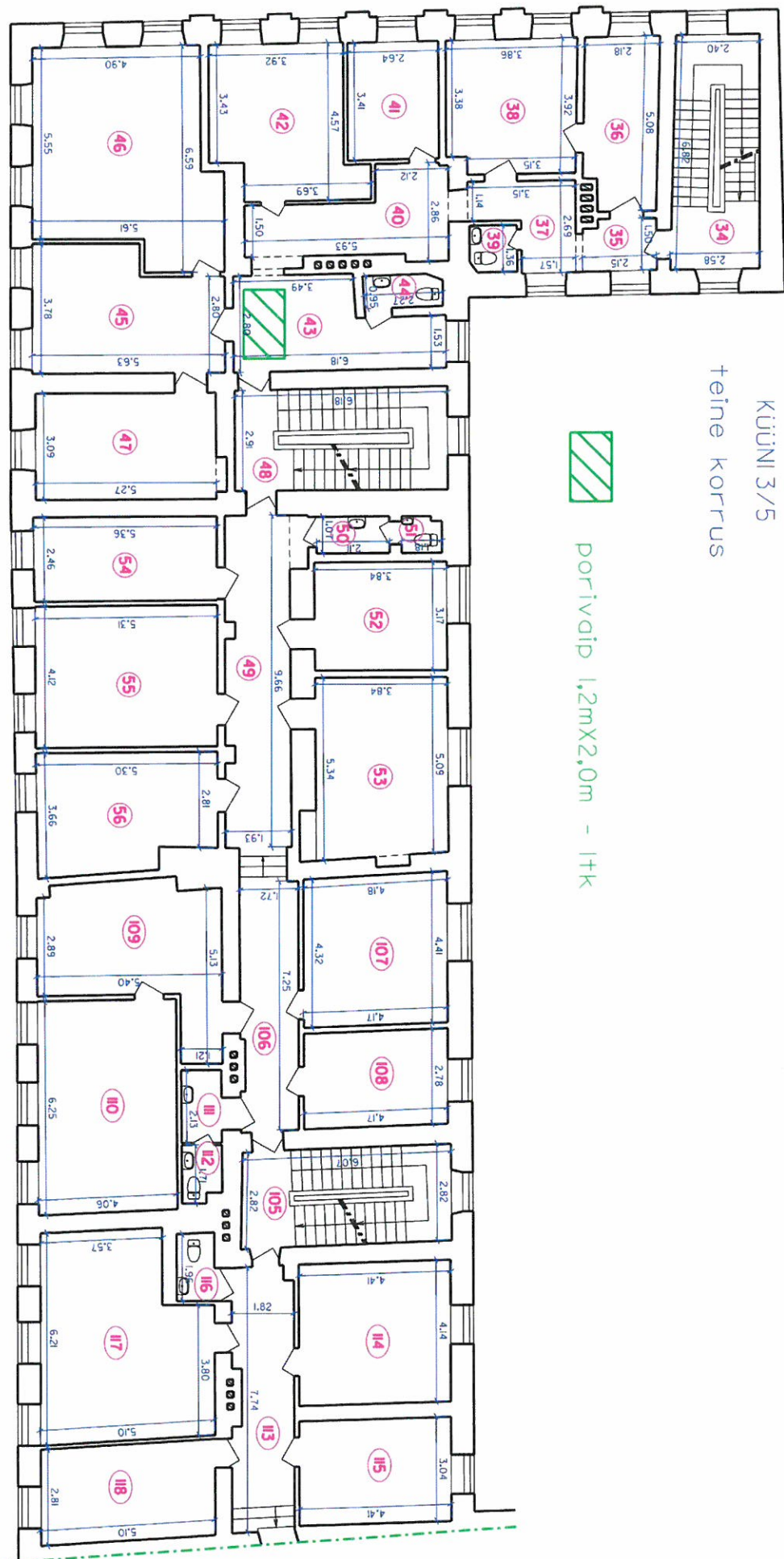


KÜÜNI 3/5

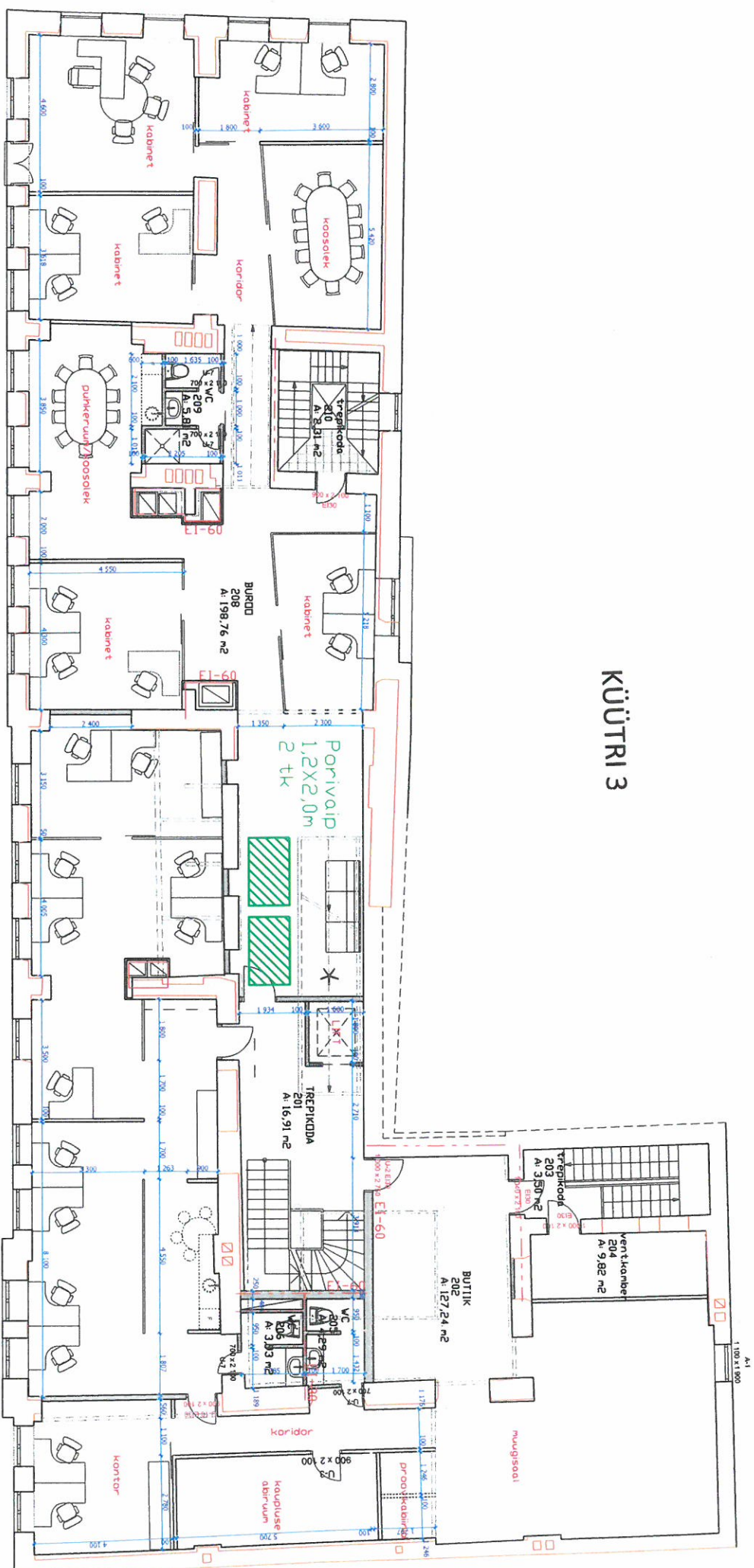
teine korrus

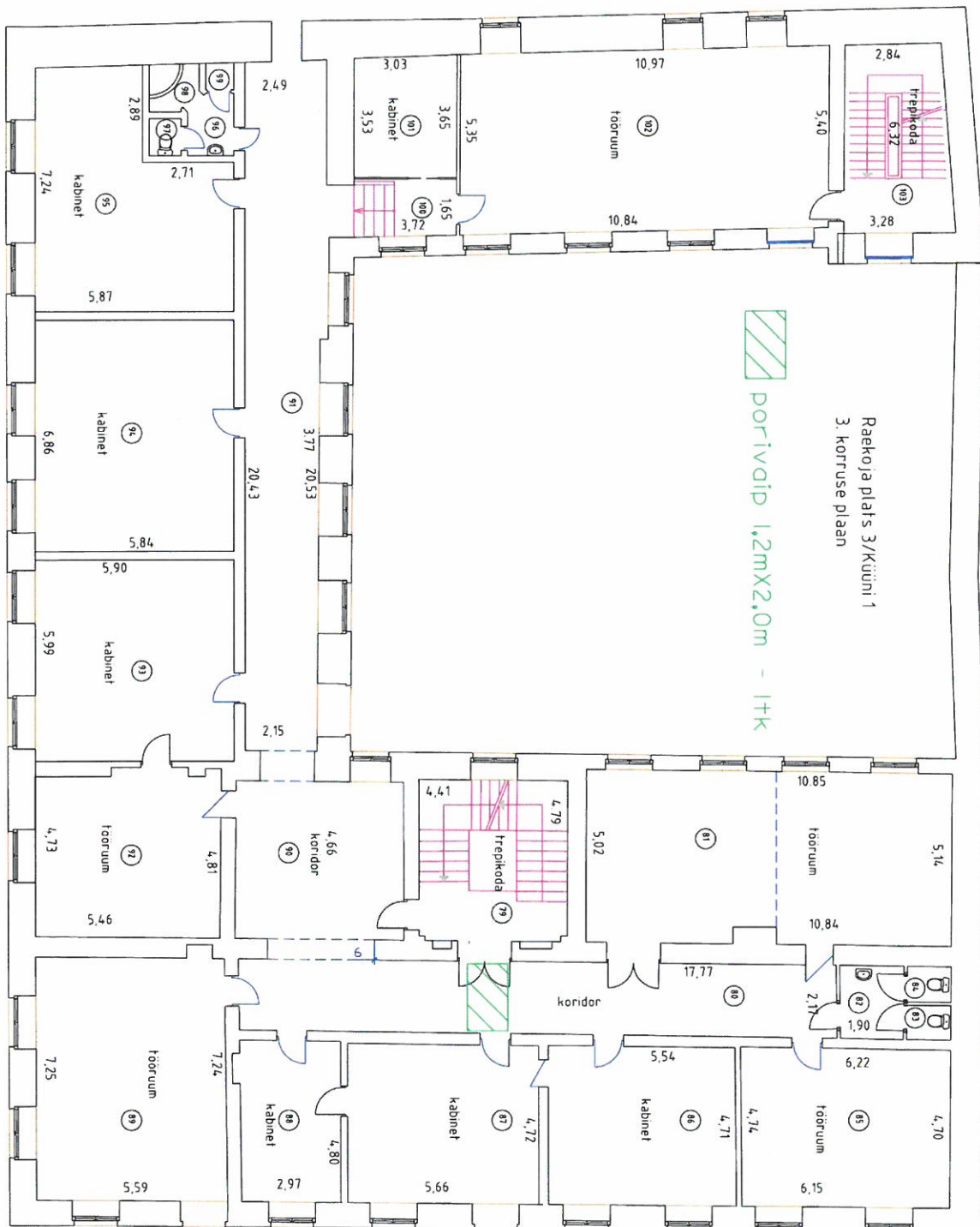


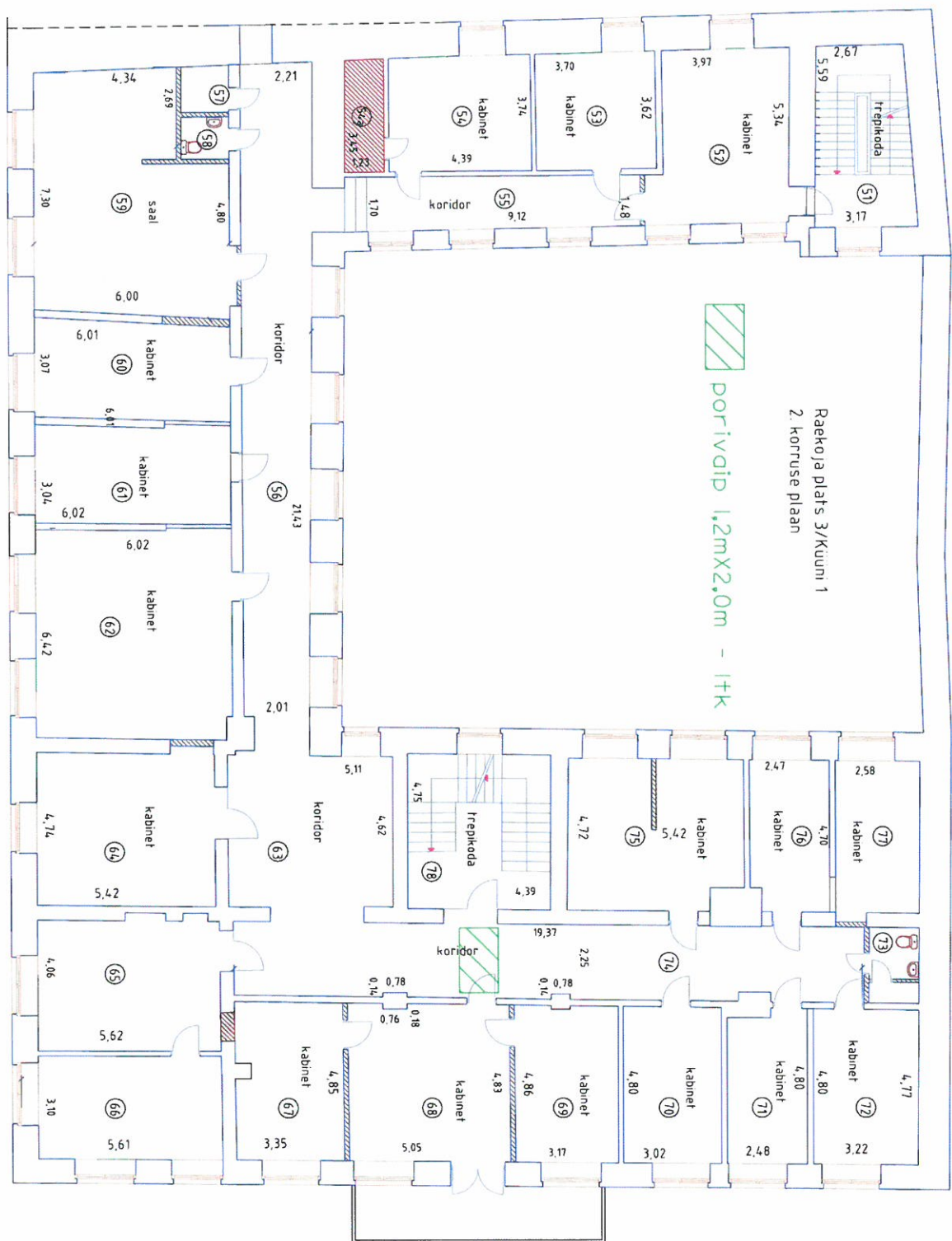
portivaip 1,2mX2,0m - 1tk

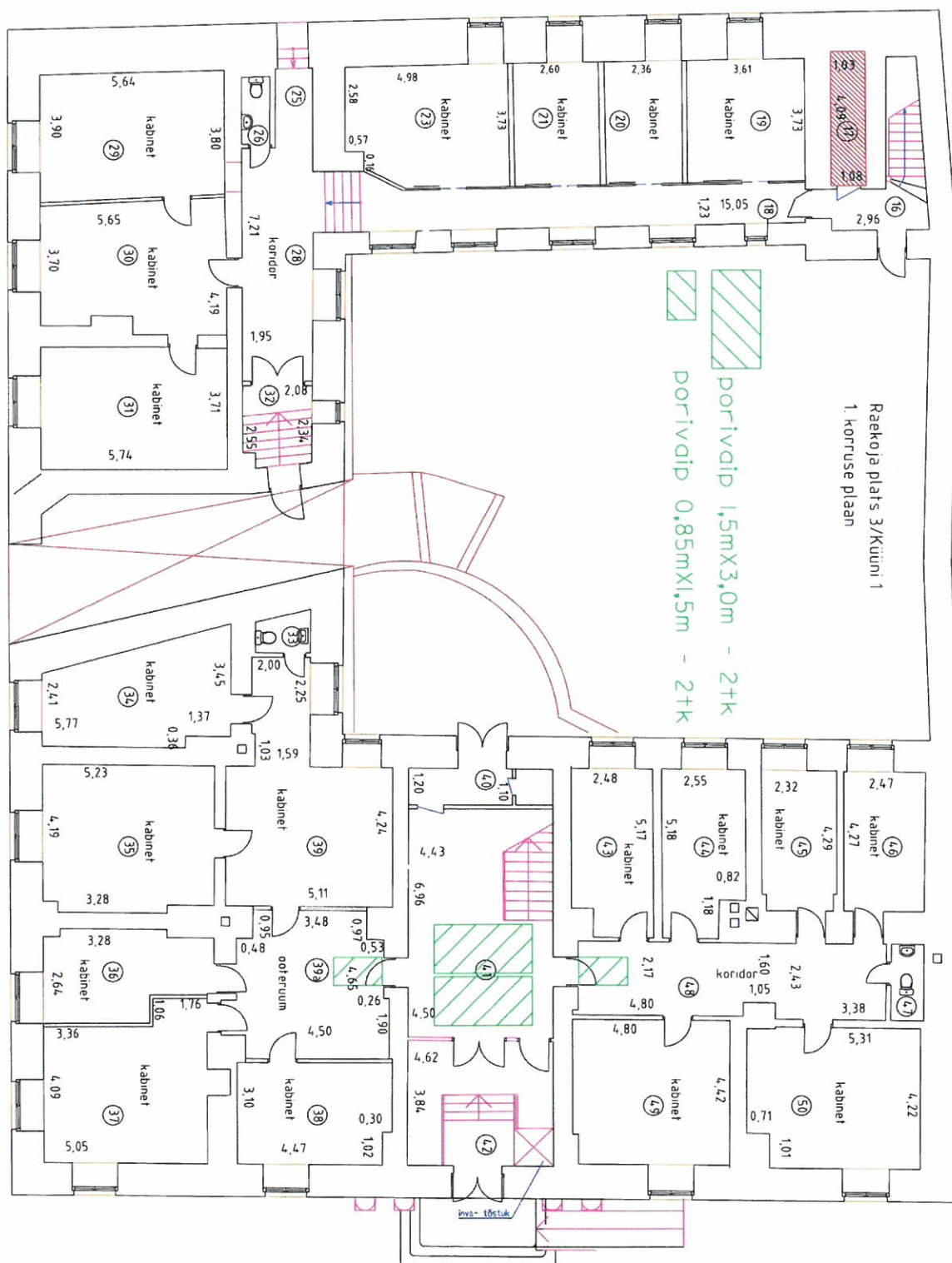


KÜÜTRI 3









Raekoja plats 3/Küüni 1
Katusekoruse plaan

porivaid 0,85mX1,5m - 2tk

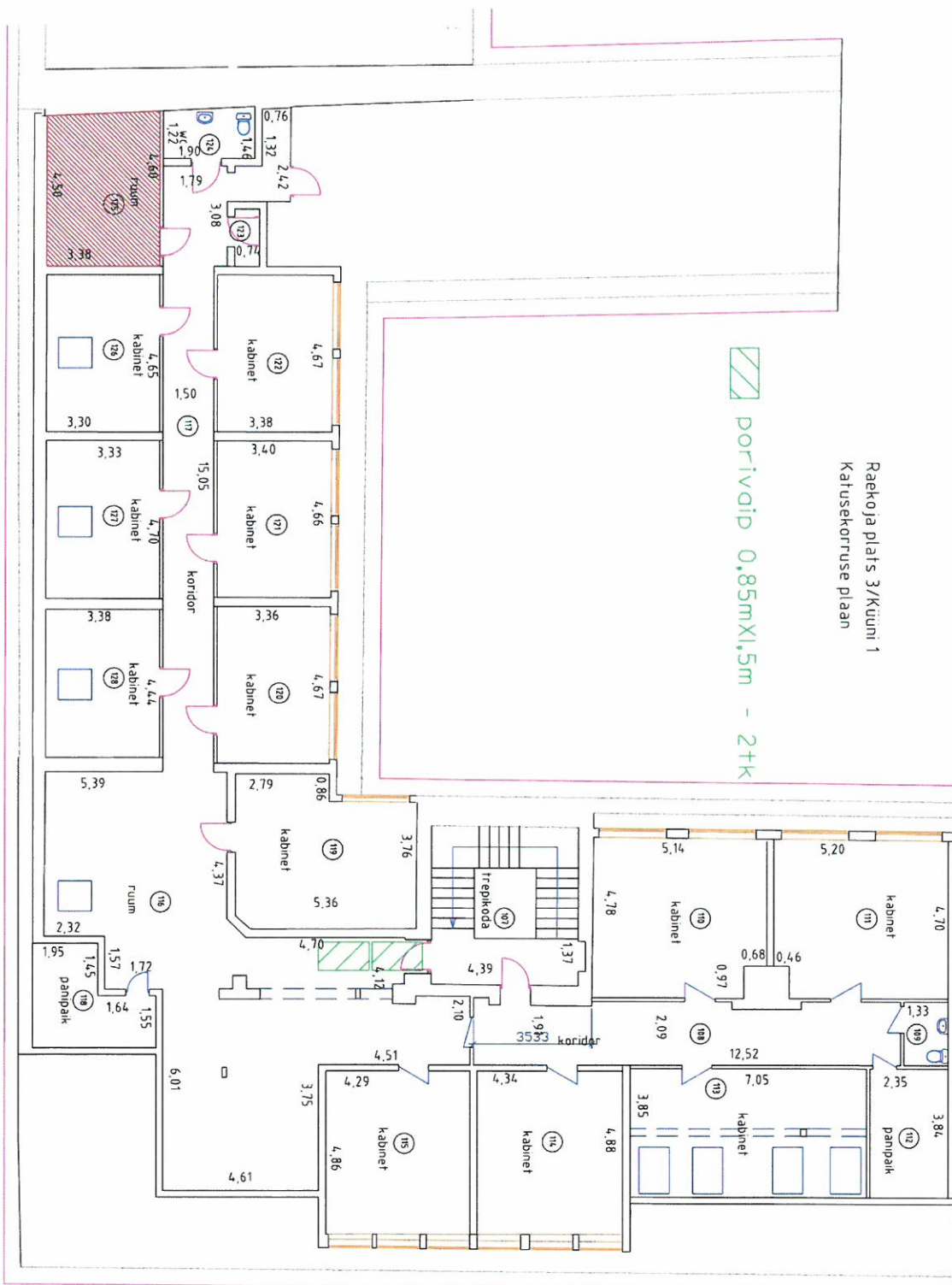
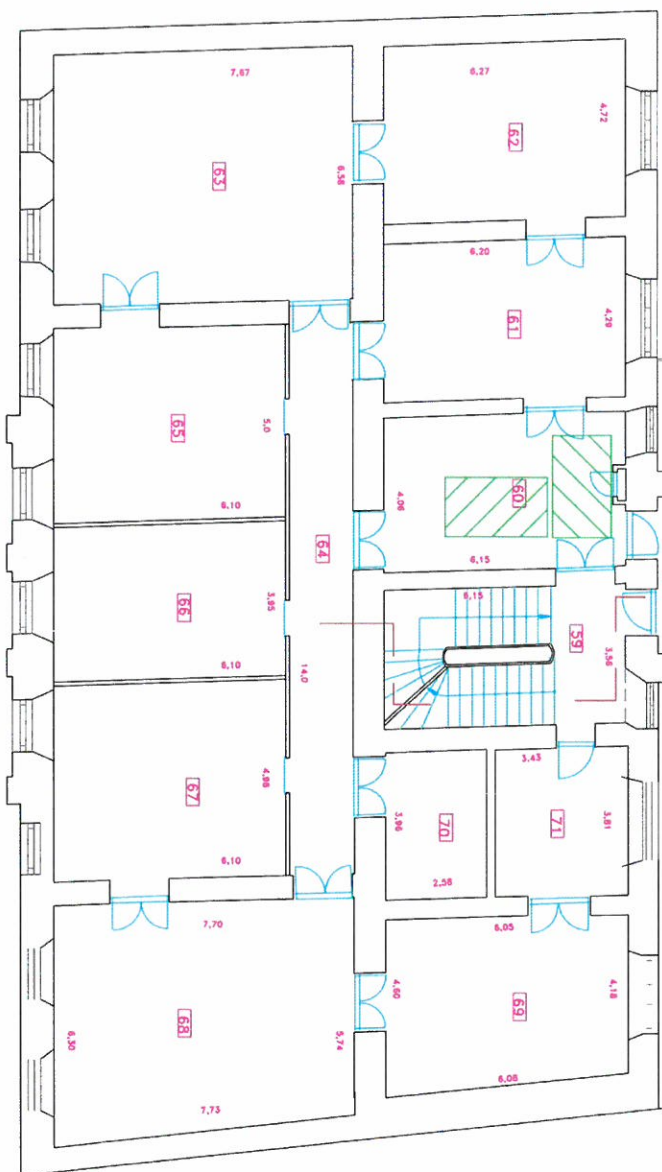


Figure 1 is a schematic diagram of a building layout. It shows several rooms with dimensions and door locations. The dimensions are: 2.06, 2.7, 4.32, 3.1, 3.47, 2.10, 1.92, 3.54, 7.5, 7.7, 4.32, 3.23, 7.5, 3.51, and 6.93. Blue arrows indicate door locations and directions.

porvaibad
1.5mX3.0m - 2+k



RAEKUJA plats 12
teine korpus

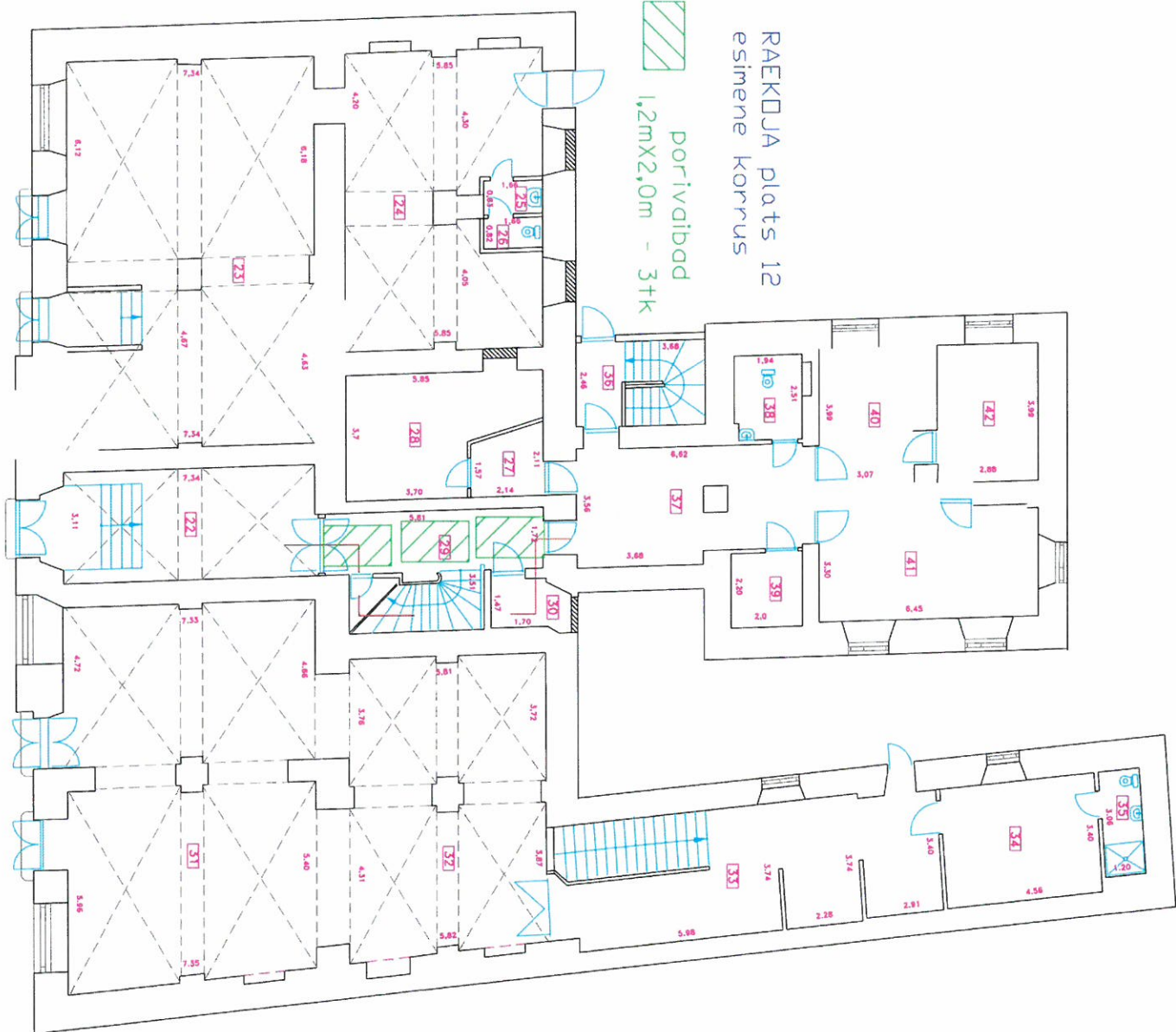


portivaip
1,2mX2,0m - 1tk

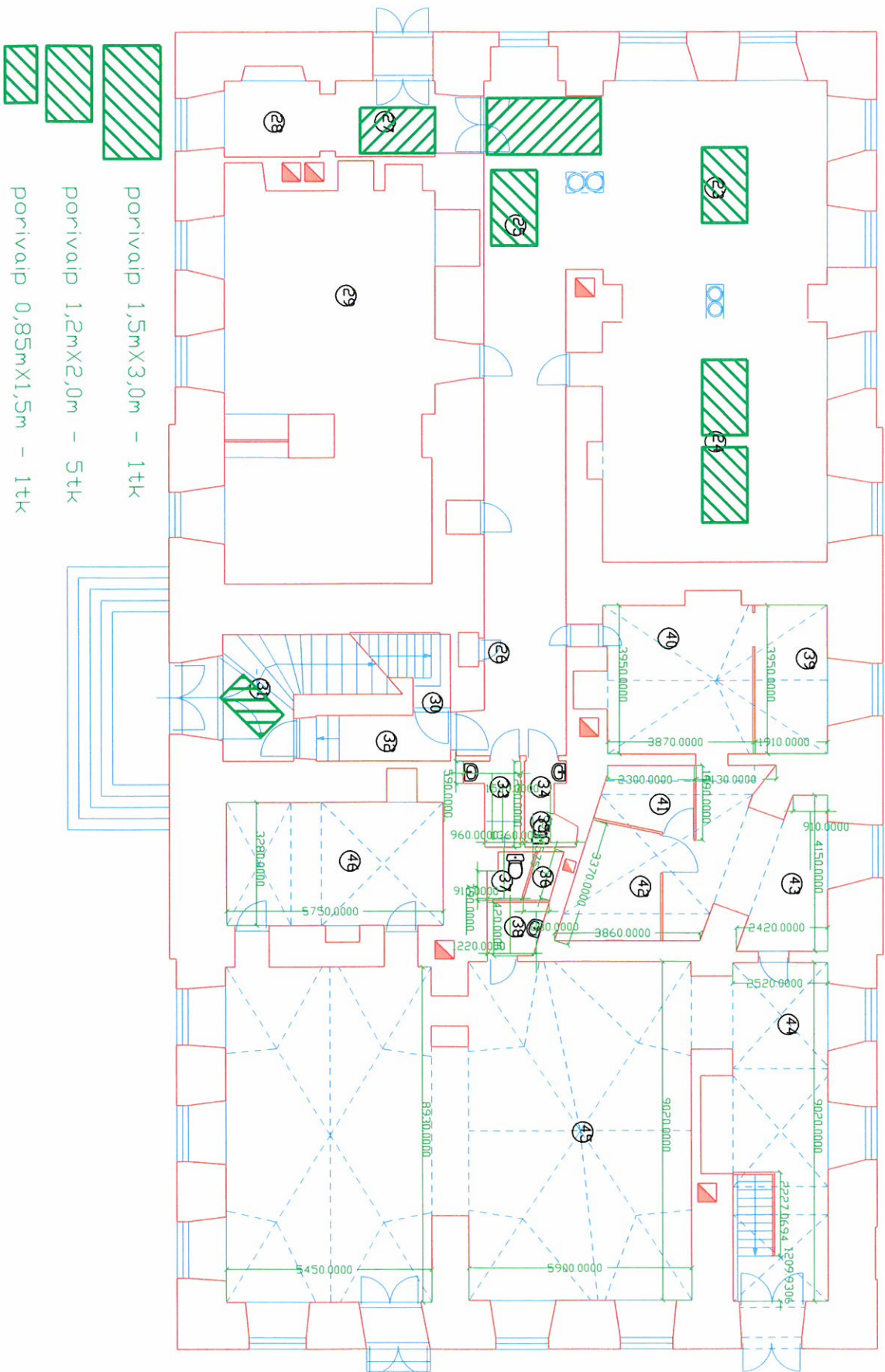


RAEKDJA plats 12 esimene korrus

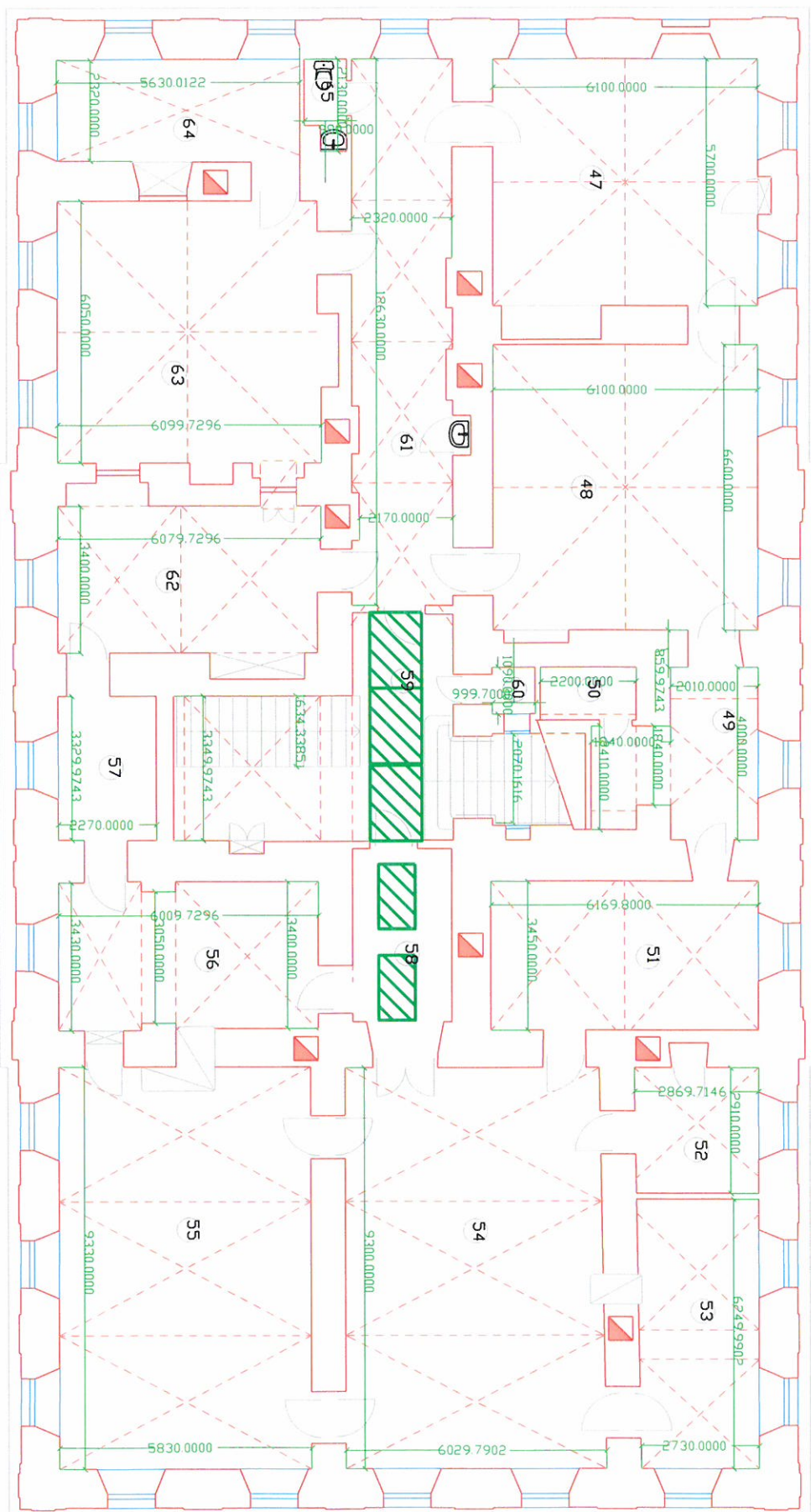
portivaibad
1,2mX2,0m - 3tk



RAEKODA esimene korrus



RAEKODA teine korrus

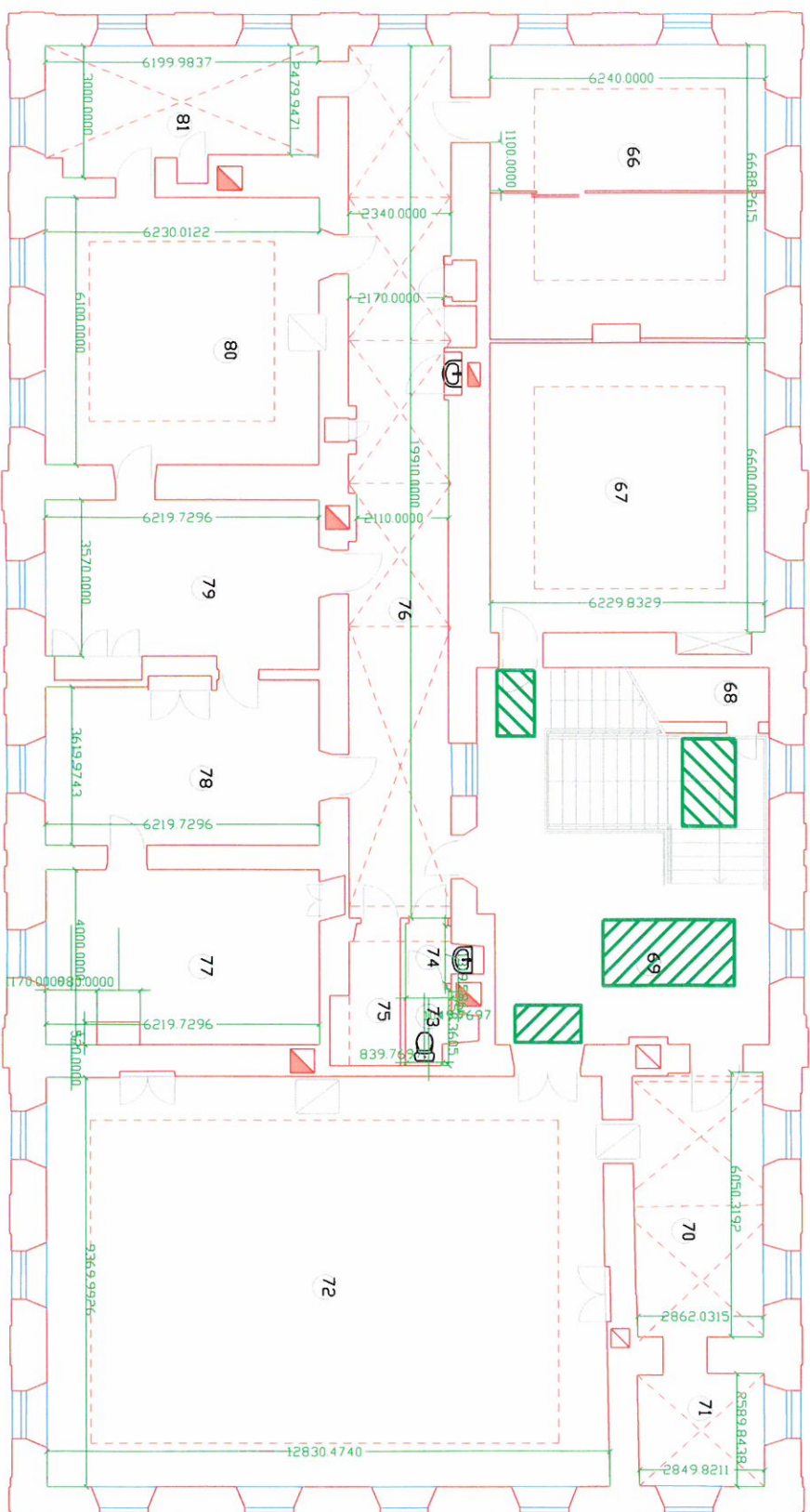


porivaip 0,85mX1,5m - 2tk



porivaip 1,2mX2,0m - 3tk

RAEKODA kolmas korrus



porivaip 1,5mX3,0m - 1tk



porivaip 1,2mX2,0m - 1tk

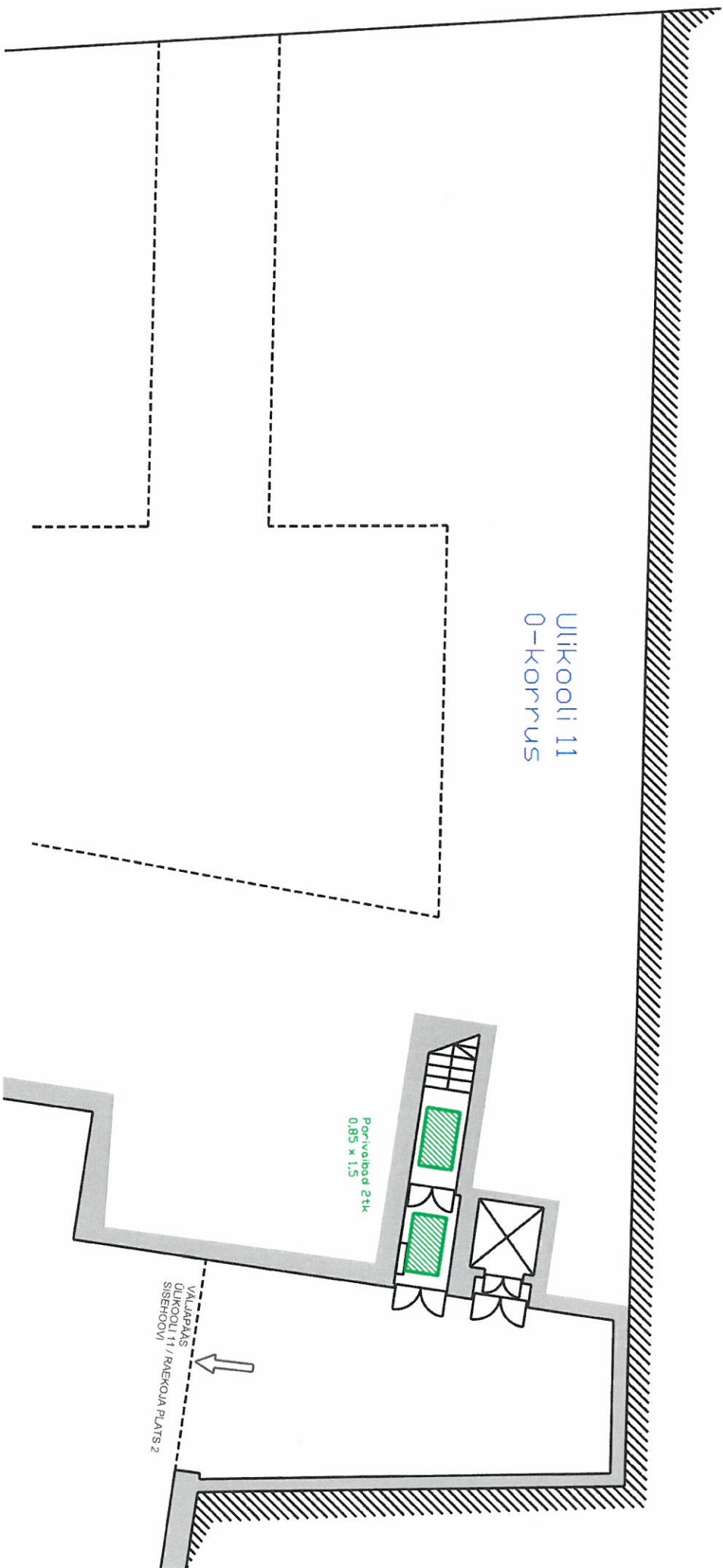


porivaip 0,85mX1,5m - 2tk

Ülikooli 11
0-korrus

Porivalbod 2 tk
0,85 x 1,5

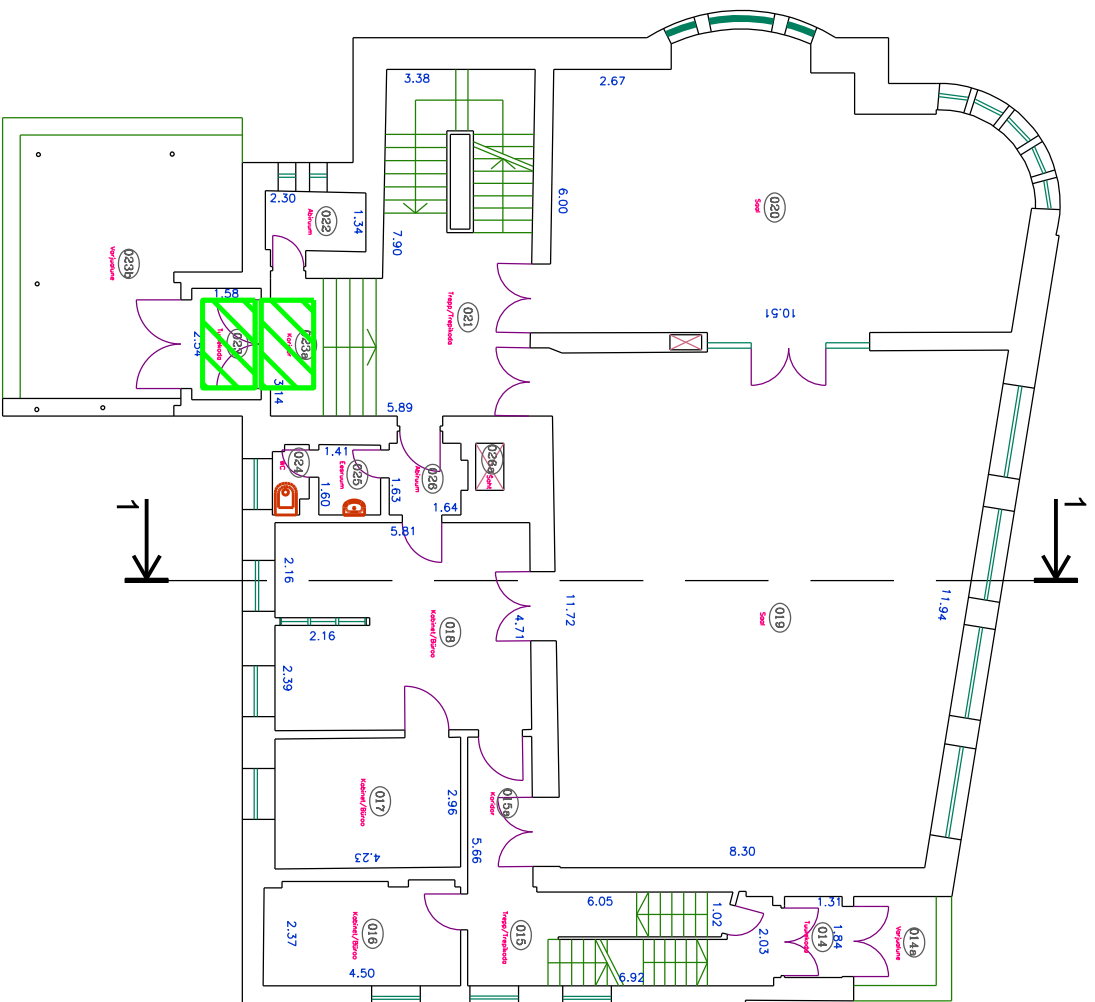
VALAPÄÄS
ÜLIKOOI 11 / RAEKOJA PLATS 2
SISEHOVI



Architectural floor plan of a building. The plan includes dimensions for various rooms and a central corridor. A green hatched area is labeled "Portaal 0,85 x 1,5". The plan also shows a staircase and a large room labeled "II korrus".

Architectural floor plan of a building. The plan includes dimensions for various rooms and a central corridor. A green hatched area is labeled "Portaal 0,85 x 1,5". The plan also shows a staircase and a large room labeled "II korrus".

Architectural floor plan of a building. The plan includes a central corridor and several rooms. A green shaded area is labeled "Portaal 0,85 x 1,5". The plan also shows a staircase and a large room labeled "II korrus". Dimensions are provided for various rooms and the central corridor.



Tiigi 12 esimene korrus



porivaibad 1,2x2,0m 2 tk